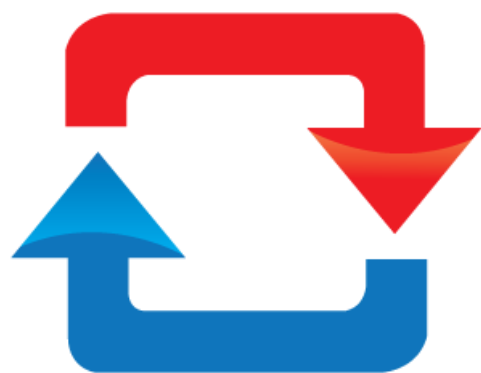
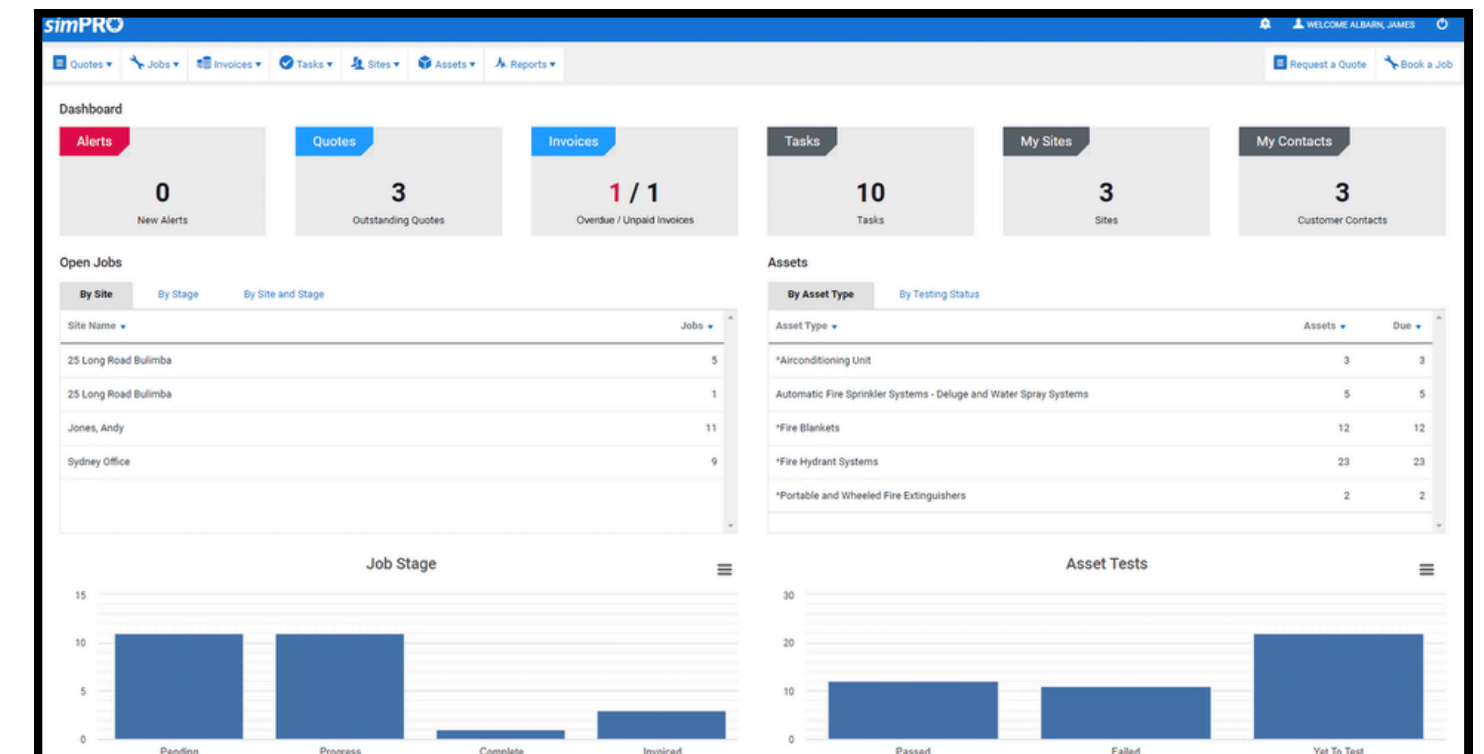
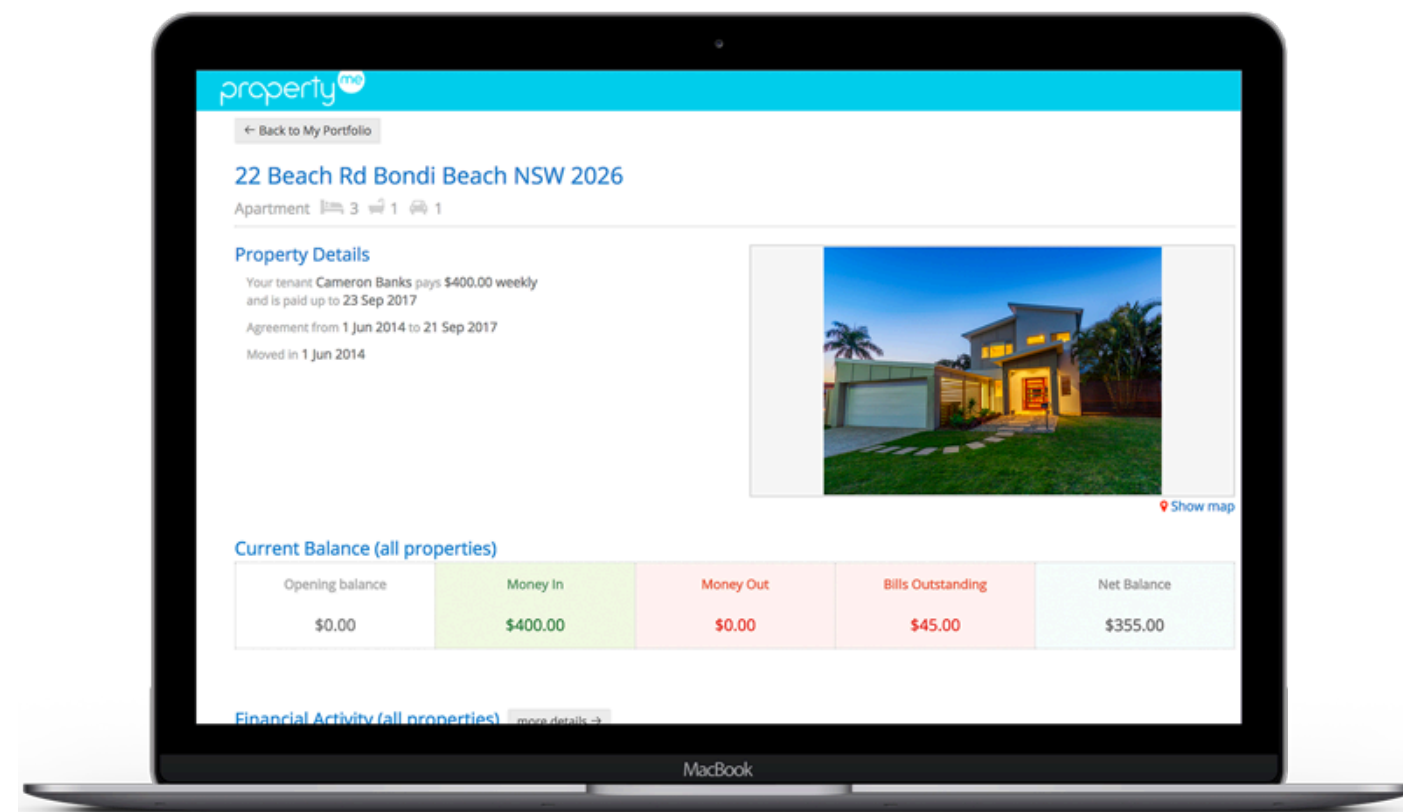


propertyTM 



SIMPRO [®]



Sync Properties & Contacts from PropertyMe to simPRO

PropertyMe to simPRO Integration

In Short:

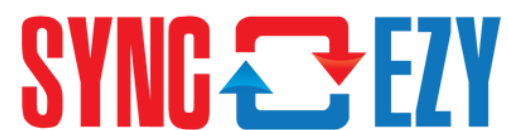
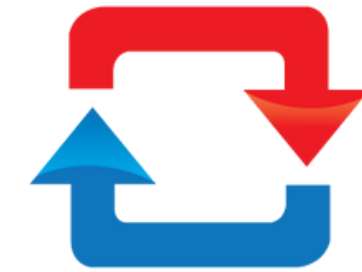
1. Connect your PropertyMe Contact Database (Tenants & Landlords) to simPRO.
2. Automatically sync across Tenant and Landlord contact details to simPRO for jobs.

What the integration does:

- Sync your PropertyMe database into simPRO
- Bring over Tenants & Landlords and all their contact details
- Sync all contact names, contact details, addresses and fields over to simPRO
- Reduces need to create manual work order requests

Who is it for:

- Smoke Alarm testing businesses
- Electrical & Safety testing companies
- Plumbing & Gas companies
- HVAC teams
- Fire & Safety workers





Properties



Sites



Property Manager



Site Contact- PM



Tenant



Site Contact - Tenant



Landlord



Site Contact- Landlord



Automate your WORKFLOW



Offer a seamless alternative to



Detector Inspector



Offer a seamless alternative to Property Managers



- Autosync the entire Property Database or selectively import certain labels.
- Automatic Notifications when new properties get added.
- Tenant and Property details kept automatically in sync.

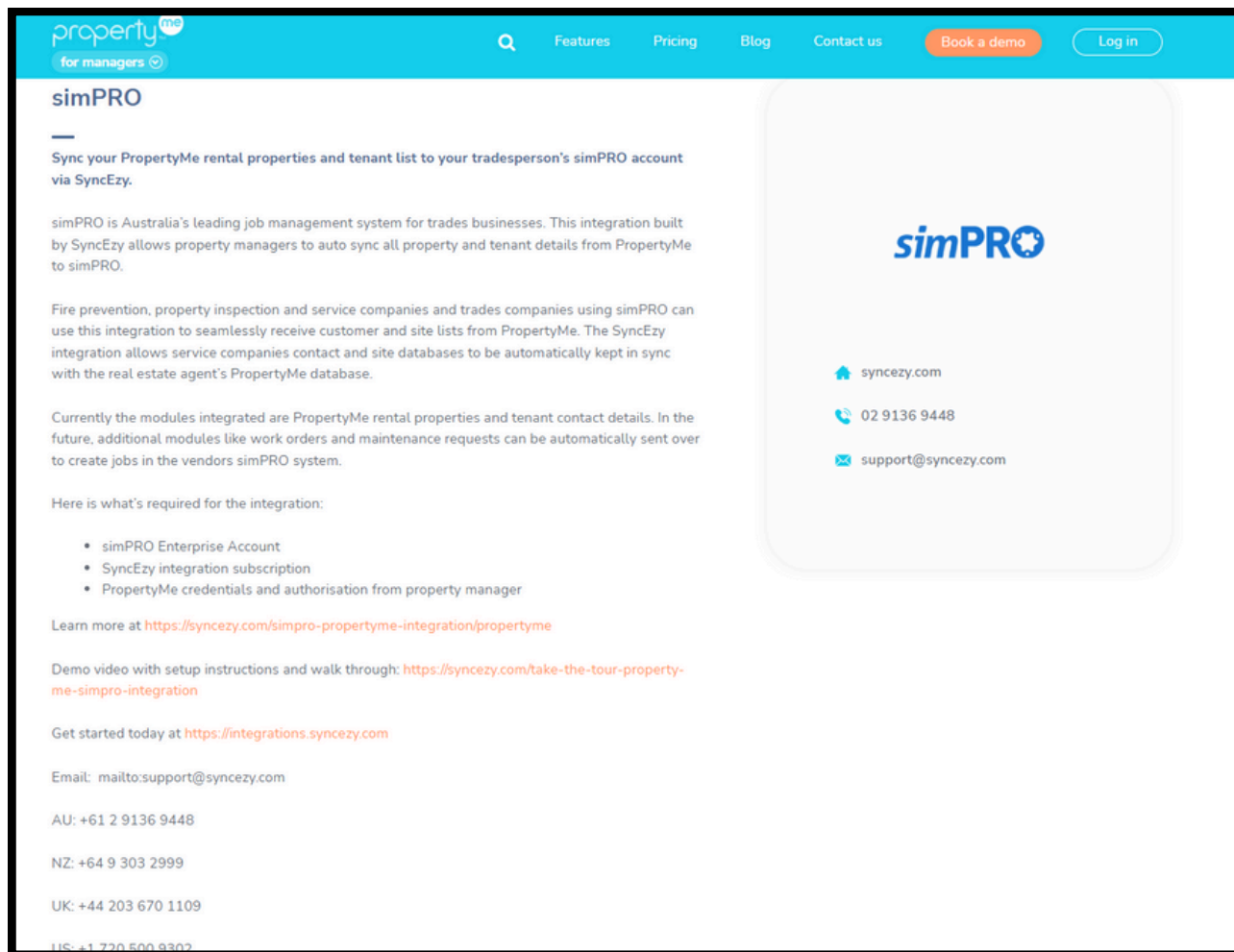
Customize pairing and capture all data

A screenshot of the SIMPRO web application's "Contact Pairing" interface. The interface has a header with the PropertyMe and SIMPRO logos, a "One Way" sync indicator, and a navigation menu. The main content area is titled "Contact Pairing" and contains two columns of dropdown menus for field selection. The left column, "Select PropertyMe Fields", includes FirstName, LastName, Email, WorkPhone, and CellPhone. The right column, "Select simPRO Fieldss", includes GivenName, FamilyName, Email, WorkPhone, and CellPhone. Each dropdown menu has a red trash icon to its right. At the bottom of the interface is a blue button labeled "+ Add Fields".

Automate your WORKFLOW



Authorised Integration approved by both Apps



Approved Addon / Integration



SyncEzy: 10+ years of expertise, 50+ deep integrations, and official partners with every software we connect.

SyncEzy has obtained SOC2 Type 2 Certification, demonstrating our commitment to data security and privacy.

Learn More: <https://syncezy.com/security/>

